

Anti-DDI2 antibody

Cat. No.	ml124754
Package	25 µl/100 µl/200 µl
Storage	-20°C, pH7.4 PBS, 0.05% NaN ₃ , 40% Glycerol

Product overview

Description	Anti-DDI2 rabbit polyclonal antibody
Applications	ELISA, IHC
Immunogen	Fusion protein of human DDI2
Reactivity	Human, Mouse
Content	0.84 mg/ml
Host species	Rabbit
Ig class	Immunogen-specific rabbit IgG
Purification	Antigen affinity purification

Target information

Symbol	DDI2
Full name	DNA damage inducible 1 homolog 2
Synonyms	
Swissprot	Q5TDH0

Target Background

DDI1 and DDI2 are ubiquitin receptor homologs of the *Saccharomyces cerevisiae* ddi1 protein, which is involved in regulation of the cell cycle and the late secretory pathway. DDI2 is a 399 amino acid protein that contains one ubiquitin-like domain and exists as three isoforms as a result of alternative splicing. The gene encoding DDI2 maps to human chromosome 1, the largest human chromosome which spans about 260 million base pairs and makes up 8% of the human genome. Other notable genes located on chromosome 1 include LMNA, which is associated with the rare aging disease Hutchinson-Gilford progeria, and the MUTYH gene, which is partially responsible for familial adenomatous polyposis. Stickler syndrome, Parkinsons, Gaucher disease and Usher syndrome.

订购热线: 4008-898-798

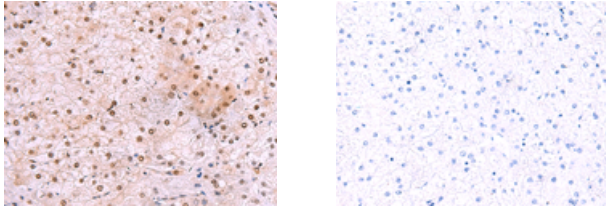
Applications

Immunohistochemistry

Predicted cell location: Cytoplasm and Nucleus

Positive control: Human liver cancer

Recommended dilution: 50-300



The image on the left is immunohistochemistry of paraffin-embedded Human liver cancer tissue using ml124754(DD12 Antibody) at dilution 1/50, on the right is treated with fusion protein. (Original magnification: $\times 200$)

ELISA

Recommended dilution: 5000-10000

联系电话: 4008-898-798, 021-61725725

联系QQ: 2881505695, 2881505696

邮箱: mlbio_cn@yeah.net

网址: www.mlbio.cn