

Anti-RPS6KB2 antibody

Cat. No.	ml262006
Package	25 µl/100 µl/200 µl
Storage	-20°C, pH7.4 PBS, 0.05% NaN ₃ , 40% Glycerol

Product overview

Description	Anti-RPS6KB2 rabbit polyclonal antibody
Applications	ELISA, WB, IHC
Immunogen	Synthetic peptide of human RPS6KB2
Reactivity	Human, Mouse
Content	0.3 mg/ml
Host species	Rabbit
Ig class	Immunogen-specific rabbit IgG
Purification	Antigen affinity purification

Target information

Symbol	RPS6KB2
Full name	ribosomal protein S6 kinase, 70kDa, polypeptide 2

Synonyms KLS; SRK; S6K2; STK14B; p70S6Kb; P70-beta; S6K-beta2; P70-beta-1; P70-beta-2;
p70(S6K)-beta

Swissprot Q9UBS0

Target Background

This gene encodes a member of the RSK (ribosomal S6 kinase) family of serine/threonine kinases. This kinase contains 2 nonidentical kinase catalytic domains and phosphorylates the S6 ribosomal protein and eucaryotic translation initiation factor 4B (eIF4B). Phosphorylation of S6 leads to an increase in protein synthesis and cell proliferation.

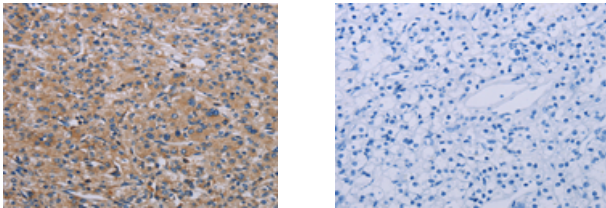
Applications

Immunohistochemistry

Predicted cell location: Cytoplasm

Positive control: Human prostate cancer

Recommended dilution: 25-100



The image on the left is immunohistochemistry of paraffin-embedded Human prostate cancer tissue using ml262006(RPS6KB2 Antibody) at dilution 1/40, on the right is treated with synthetic peptide. (Original magnification: $\times 200$)

Western blotting

Predicted band size: 53 kDa

Positive control: HeLa and K562 cells

Recommended dilution: 200-1000

订购热线: 4008-898-798

Gel: 8%SDS-PAGE

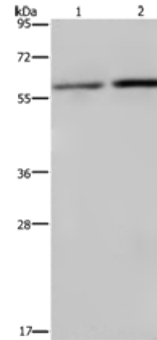
Lysate: 40 μ g

Lane 1-2: Hela cells, K562 cells

Primary antibody: ml262006(RPS6KB2 Antibody) at dilution 1/250

Secondary antibody: Goat anti rabbit IgG at 1/8000 dilution

Exposure time: 10 minutes



ELISA

Recommended dilution: 1000-2000

联系电话: 4008-898-798, 021-61725725

联系QQ: 2881505695, 2881505696

邮箱: mlbio_cn@yeah.net

网址: www.mlbio.cn