

Anti-SERPINH1 antibody

Cat. No.	ml162935
Package	25 µl/100 µl/200 µl
Storage	-20°C, pH7.4 PBS, 0.05% NaN ₃ , 40% Glycerol

Product overview

Description	Anti-SERPINH1 rabbit polyclonal antibody
Applications	ELISA, WB
Immunogen	Synthetic peptide of human SERPINH1
Reactivity	Human, Mouse, Rat
Content	0.5 mg/ml
Host species	Rabbit
Ig class	Immunogen-specific rabbit IgG
Purification	Antigen affinity purification

Target information

Symbol	SERPINH1
Full name	serpin peptidase inhibitor, clade H (heat shock protein 47), member 1, (collagen binding protein 1)
Synonyms	CBP1; CBP2; OI10; gp46; AsTP3; HSP47; PIG14; PPR0M; RA-A47; SERPINH2
Swissprot	P50454

Target Background

This gene encodes a member of the serpin superfamily of serine proteinase inhibitors. The encoded protein is localized to the endoplasmic reticulum and plays a role in collagen biosynthesis as a collagen-specific molecular chaperone. Autoantibodies to the encoded protein have been found in patients with rheumatoid arthritis. Expression of this gene may be a marker for cancer, and nucleotide polymorphisms in this gene may be associated with preterm birth caused by preterm premature rupture of membranes.

订购热线: 4008-898-798

Applications

Western blotting

Predicted band size:46 kDa

Positive control:NIH/3T3 cell

Recommended dilution: 500-2000

Gel: 8%SDS-PAGE

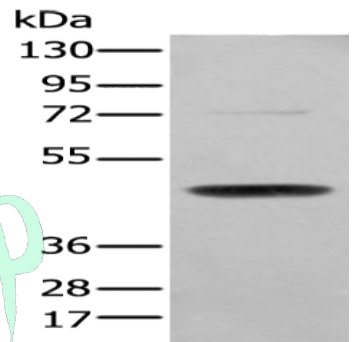
Lysate: 40 µg

Lane: NIH/3T3 cell

Primary antibody: ml162935(SERPINH1 Antibody) at dilution 1/200

Secondary antibody: Goat anti rabbit IgG at 1/8000 dilution

Exposure time: 5 seconds



ELISA

Recommended dilution:5000-10000

联系电话: 4008-898-798, 021-61725725

联系QQ: 2881505695, 2881505696

邮箱: mlbio_cn@yeah.net

网址: www.mlbio.cn